



The combination of natural textures, bold, black accents and industrial details gives the **kitchen** and **dining room** a contemporary style. The cabinetry was made and installed by Kingston Kitchens.

Green SCENE

This estate home is all about maximising space and indoor-outdoor flow

For Benno and Danelle Terblanche, building their own home has been a labour of love. They chose a compact, sloping site facing a green belt in a KZN North Coast estate and set about planning a house that would fulfil all their requirements. “We wanted quite a lot in a small area: four bedrooms, a separate TV room, a wine cellar, an office and a spacious living area,” she says. In addition, the house had to be built around a gorgeous old tree on the property and have an indoor-outdoor flow. ▽

ABOVE: In the **bar area**, timber shelving displays both glassware and drinks. A built-in wine rack above the drinks fridge makes good use of a potentially wasted space.

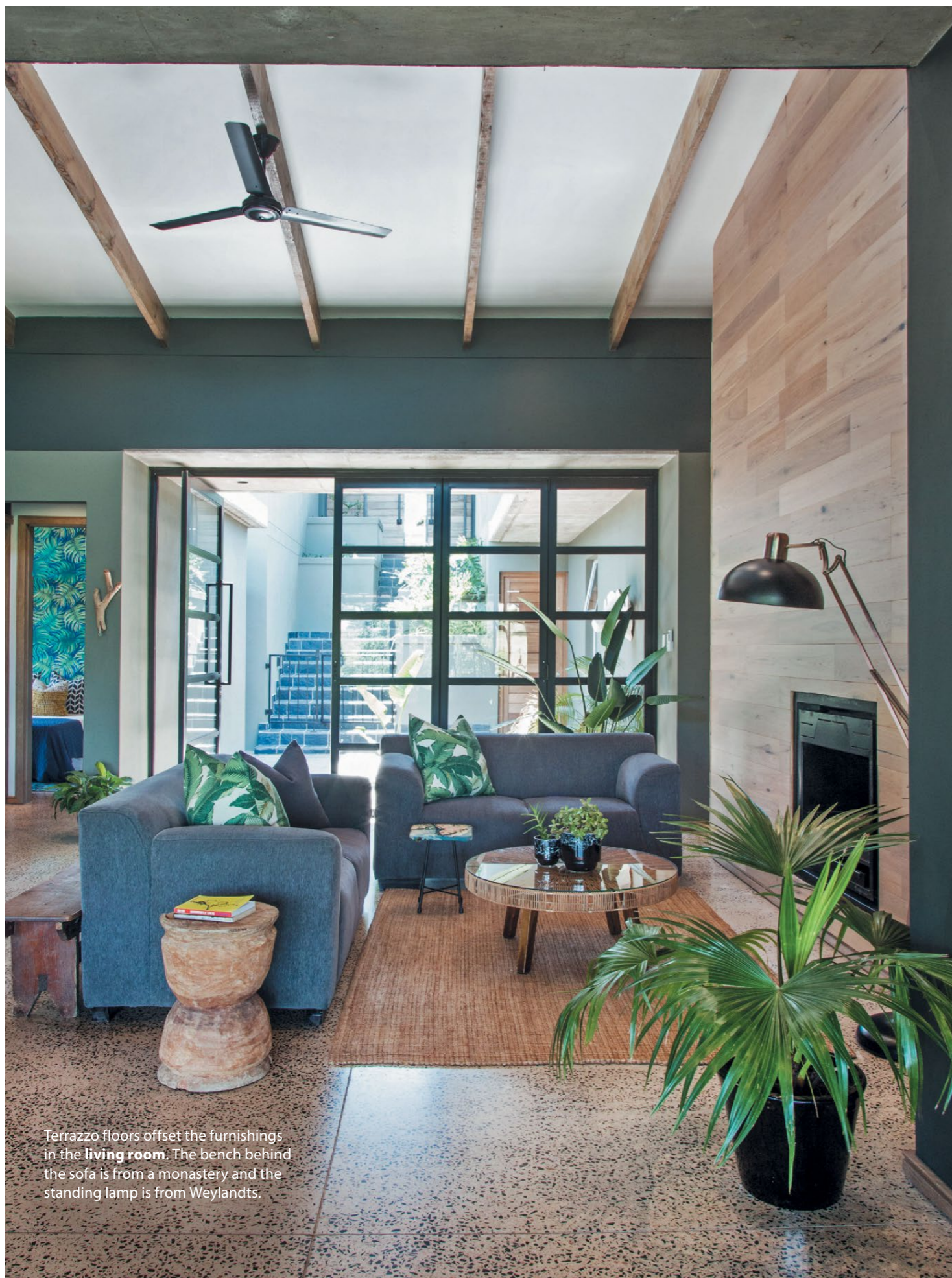
WHO LIVES HERE

Interior and graphic designer Danelle Terblanche, her husband, Benno, a builder, and their one-year-old son, Ben-Louis.

THE HOUSE

A four-bedroom, four-bathroom house with an open-plan living area, office, TV lounge, wine cellar and patio.

TEXT: CANDICE BOTHA PHOTOGRAPHS: SALLY CHANCE



Terrazzo floors offset the furnishings in the living room. The bench behind the sofa is from a monastery and the standing lamp is from Weylandts.



Designed and built by QSB Construction, the house has garages at road level, with the office, TV lounge and wine cellar beneath them. The rest of the house opens out towards the garden. “To ensure that there was outdoor space on both sides of the house, we created an inviting courtyard at the base of the entrance stairs. The office, TV lounge and living room all open on to it, maximising light and the indoor-outdoor feel,” Danelle explains.

The architecture is contemporary, with concrete and steel elements and terrazzo floors. The Terblanches made a feature of the ceilings, combining cast concrete and timber beams to demarcate certain areas. “As the high ceilings give a sense of space, I felt we could use lots of interior detail and colour, without making the rooms feel cluttered,” says Danelle.

The kitchen forms the centre of the living areas and striking green tiles, handmade by Hadedá, are a focal point. ▷

THIS PAGE, CLOCKWISE FROM TOP LEFT: ● “The house faces west so we have lovely afternoon sun and beautiful sunsets,” says Danelle. “The hanging chair on the **patio** is the ideal place to enjoy them.” ● In the **sitting room**, a pair of old armchairs were given new slipcovers. ● Collections of ornaments and art create interesting focal points.





Get the look

Pair contemporary elements with pops of emerald to get this stylish look

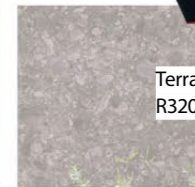
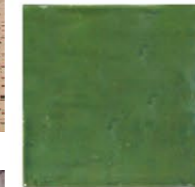


Retro shelf small, R1 800, Mr Price Home.



Metal pendant, R5 045, K. Light Import.

Sandstone pendant, R1 640, Eurolux.



Terrazzo Bianco tile, R320,85/m², WOMAG.



Provenza Verde Victoria mosaic tile, R29 each, Italtile.



Asparagus fern mossball R320, Plantify.



Tolix stool, R699, Union3.



Cone bookshelf, R7 995, Weylandts.



"My husband and I love combining old and new and my passion is colour!" says Danelle. The couple have collected art and furniture for years, much of it second hand. "We both love the character they add," says Danelle. "All houses need a bit of warmth and you get that from older items."

The wallpaper in the different rooms was chosen to complement their existing furnishings, the charcoal and deep green paintwork and timber cabinetry. "All the designs are playful and not too formal, as we are not formal at all. We want visitors to feel at home and I kept this in mind when making my selection," she says.

The family spends a lot of time outside on the veranda and in the garden under the tree. "We love making a fire, like true South Africans, and enjoy being outdoors," Danelle says. "Luckily for us, with Durban's mild winters, we can do this year round."

THIS PAGE, CLOCKWISE FROM TOP LEFT: ● Danelle managed to fit a shower into this tiny **guest bathroom**. The narrow vanity unit is from On Tap. ● The **guest bedroom** features an eclectic collection of items offset by the wallpaper from Graphic Gurus. ● A troop of playful monkeys decorates the walls of the second **guest room**. The group of stools makes an interesting alternative to a traditional bedside table.



SHOPPING CANDICE BOTHA PHOTOGRAPHS SUPPLIED PRODUCTS ARE SUBJECT TO AVAILABILITY AND PRICES WERE CHECKED AT TIME OF GOING TO PRINT. SEE PAGE 2.

THIS PAGE, FROM TOP TO BOTTOM: ● A concrete wall separates the **bathroom** from the main bedroom. ● The wallpaper by Graphic Gurus was the starting point for the **main bedroom**. The pedestals are tree trunks the couple found and sanded down. The pendant lights are from Wire World.

SOURCES Danelle Terblanche danelle@graphicgurus.co.za Eurolux eurolux.co.za Graphic Gurus graphicgurus.co.za Hadeda hadeda-tiles.com Italtile italtile.co.za Kingston Kitchens 072 586 6476 K. Light Import klight.co.za Mr Price Home mrphome.com On Tap ontap.co.za Plantify plantify.co.za QSB Construction 083 412 4841 Union3 union3.co.za Weylandts weylandts.co.za Wire World wireworld.co.za WOMAG womag.co.za